



AK RIYADH PARK

Approved, Planned and Developed by

PGC



- SUPERMARKET
- FISH / MEAT / VEGETABLE / FRUIT
- MONEY EXCHANGE
- FURNITURE SHOPS
- PLUMBING - ELECTRICAL - SAFETY
- MEN'S PARLOUR
- POLYCLINIC - PHARMACY - OPTICALS
- CHOCOLATES - NUTS - DATES - GIFTS
- BLANKETS
- MOBILE - LAPTOP & REPAIR - WATCHES
- STUDIO - TRANSLATORS - JEWELRY

AK RIYADH PARK

ONE STOP SOLUTION FOR ALL SHOPPING NEEDS

perfectglobalcomltd@gmail.com
perfectglobal.akriyadhpark@gmail.com



www.akriyadhpark.com





OUR INTRODUCTION

Welcome to AK Riyadh Park!

A new commercial landmark is coming to Al Jubail, KSA— featuring shops, offices, dining spaces, and a vibrant outdoor environment.

AK Riyadh Park is a large-scale mixed-use commercial development located in the Riyadh Parking area of Jubail, developed on an almost 35,000-square-meter site. The project includes a basement with 500 parking spaces, 360 retail shops on the ground floor with an average unit size of 30 square meters, 100 office units across the first and second floors, and a vibrant rooftop featuring 22 cafés, a kids' play zone, indoor and outdoor seating areas, and a fountain, creating a complete commercial and lifestyle destination.

NEXT COMMERCIAL LANDMARK



MESSAGE FROM **THE CHAIRMAN & OWNER**

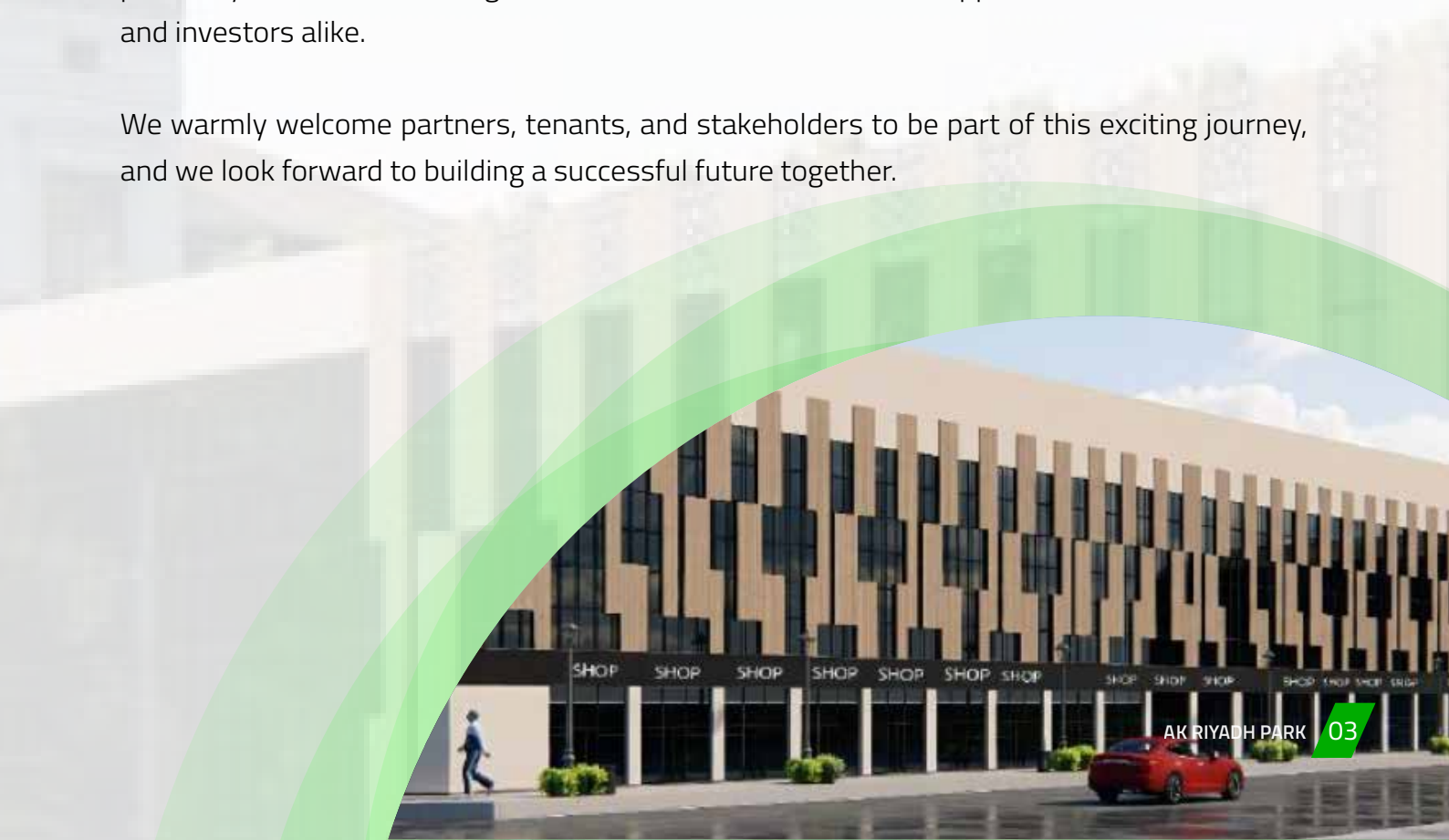
It gives me great pleasure to welcome you to AK Riyadh Park, a project developed with a clear vision to create a modern commercial landmark in Jubail, Saudi Arabia.

Our goal is to provide more than just a commercial building. We aim to deliver an integrated destination that combines retail, offices, dining, healthcare, and family leisure in one vibrant environment. AK Riyadh Park has been planned to serve the growing business and community needs of Jubail while offering investors, tenants, and visitors a high-quality and well-organized destination.

We believe that strong developments are built on vision, quality, and long-term value. For this reason, every part of AK Riyadh Park has been carefully designed to ensure convenience, accessibility, and a dynamic commercial experience. From spacious retail areas and modern office spaces to rooftop cafés and community-focused facilities, this project reflects our commitment to excellence and innovation.

As Chairman and Owner, I am proud to present AK Riyadh Park as a project that will contribute positively to the commercial growth of Jubail and create valuable opportunities for businesses and investors alike.

We warmly welcome partners, tenants, and stakeholders to be part of this exciting journey, and we look forward to building a successful future together.





AK RIYADH PARK





ENTRANCE

SHOP

SHOP

SHOP

SHOP

SHOP

SH



OUR SAFETY POLICY

At AK Riyadh Park, we are fully committed to maintaining a safe, secure, and healthy environment for all visitors, tenants, employees, contractors, and service providers within the project premises.

We believe that safety is a shared responsibility and an essential part of our daily operations. Our objective is to ensure that all commercial, office, medical, dining, and leisure areas are managed in a manner that prevents accidents, minimizes risks, and promotes the wellbeing of everyone on site.

To achieve this, AK Riyadh Park is committed to:

Providing a safe and well-maintained environment throughout all areas of the property, including parking, retail shops, offices, rooftop facilities, common areas, and service zones.

Complying with all applicable safety, health, civil defense, fire prevention, and environmental regulations of the Kingdom of Saudi Arabia.

Identifying potential hazards and taking preventive measures to reduce risks to people, property, and operations.

Ensuring that emergency exits, fire-fighting systems, alarms, signage, and safety equipment are properly installed, regularly inspected, and maintained.

Requiring all tenants, contractors, suppliers, and service personnel to follow approved safety procedures and site rules at all times.

Promoting awareness of health and safety responsibilities among employees, tenants, and visitors through clear communication, signage, and guidance.

Reporting, investigating, and addressing accidents, incidents, unsafe acts, and unsafe conditions in order to prevent recurrence.

Supporting continuous improvement in safety performance through regular review, monitoring, and corrective action.

Management of AK Riyadh Park expects full cooperation from all parties to maintain a safe environment and to contribute positively to the protection of life, property, and business continuity.

Safety is not only a legal requirement, but also a core value of AK Riyadh Park.



INSURANCE



PROTECTION



HAZARD



REGULATION



PRECAUTIONS



HEALTH



EQUIPMENT



TRAINING

Work Safety



AK RIYADH PARK



THE BASEMENT LEVEL

At AK Riyadh Park, we have an extensive parking lot at the basement level and will have a planned capacity of over 1000 Cars parking facility.



GROUND FLOOR & FIRST FLOOR RETAIL CATEGORIES

The Ground Floor at AK Riyadh Park is carefully planned to offer a vibrant and commercially attractive retail environment that blends everyday convenience with a strong lifestyle appeal. Designed to serve both residents and the surrounding community, this level is positioned to become a lively shopping destination with consistent customer movement and long-term value for tenants and investors.

With a well-curated retail mix, the Ground Floor is intended to provide a convenient and engaging shopping experience by bringing together essential services, daily needs, and specialty outlets in one accessible setting. This balanced composition strengthens the project's identity as a modern community-focused retail destination.

Planned Ground Floor Sections

1. Jewellery Shop Area
2. Supermarket Area
3. Produce and Meat Area
4. Material Shops Area – Electrical, Plumbing and Safety
5. Money Exchange Area
6. Mobile Shops Area
7. Furniture and Bedding Shops Area
8. Laundry Area
9. Gifts, Chocolates and Dates Area
10. Footwear Area
11. Parlour / Saloon Area
12. Blanket Area
13. Clothing Area
14. Baking Area

These carefully allocated sections are expected to create a dynamic commercial atmosphere, enhance customer convenience, and support a diverse tenant mix that contributes to the overall appeal and market strength of AK Riyadh Park.



AK RIYADH PARK



SUPERMARKET AREA



AK RIYADH PARK



PRODUCE AND MEAT





**MATERIAL SHOPS
(ELECTRICAL-PLUMBING-
SAFETY)**



AK RIYADH PARK



MONEY EXCHANGE AREA





AK RIYADH PARK

MOBILE SHOPS



AK RIYADH PARK



FURNITURE / BEDDING SHOPS AREA





AK RIYADH PARK

LAUNDRY AREA



AK RIYADH PARK



GIFTS - CHOCOLATES - DATES AREA





AK RYADH PARK

FOOTWEAR



PARLOUR-SALOON AREA





AK RIYADH PARK

BLANKET AREA



AK RYADH PARK



CLOTHING AREA





AK RYADH PARK

BAKING AREA



AK RIYADH PARK

THE FIRST FLOOR

The First Floor at AK Riyadh Park is designed to complement the dynamic retail character of the development by introducing a strong mix of specialty retail, service-oriented outlets, and professional commercial spaces. Planned to serve a broad customer base, this level is expected to attract visitors seeking technology, personal services, fashion, and business support functions within a modern and convenient setting.

With a thoughtfully arranged commercial layout, the First Floor is positioned to offer a diverse and practical destination that enhances the overall value of the project. Its retail and office mix is intended to create a balanced environment where shopping, technical services, and professional activities come together in one accessible location.

Planned First Floor Sections

1. Laptop and Printer Shops
2. Laptop and Printer Maintenance Shops
3. Watch Shops
4. Studios
5. Translator Offices
6. Electronics Offices
7. Perfume Shops
8. Jewellery Shops
9. Footwear Shops

The First Floor is expected to strengthen AK Riyadh Park's commercial appeal by accommodating a variety of specialized businesses that meet both everyday and professional needs. This carefully selected mix will contribute to a vibrant and functional destination, further reinforcing the project's identity as a modern retail and commercial hub.

LAPTOP AND PRINTERS AND MAINTENANCE SHOPS





AK RYADH PARK



TRANSLATORS, STUDIOS & SERVICE SHOPS





AK RYADH PARK



WATCH SHOPS



PURFUMES AND OTHER FASHION ITEM SHOPS



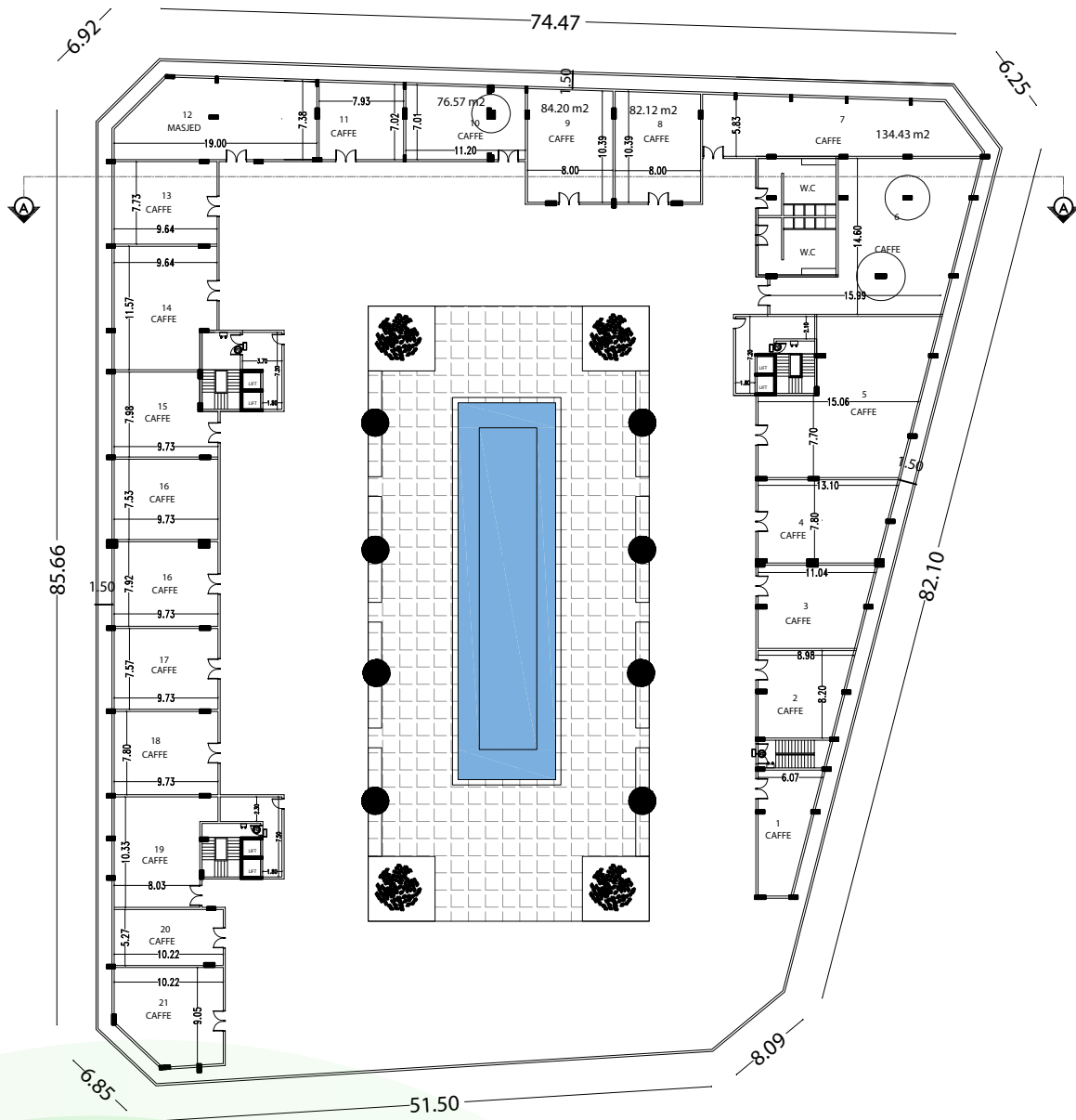


AK RYADH PARK

SECOND FLOOR - THE OFFICE SPACE



ROOF FLOOR - FOOD COURT / ENTERTAINMENT AREA



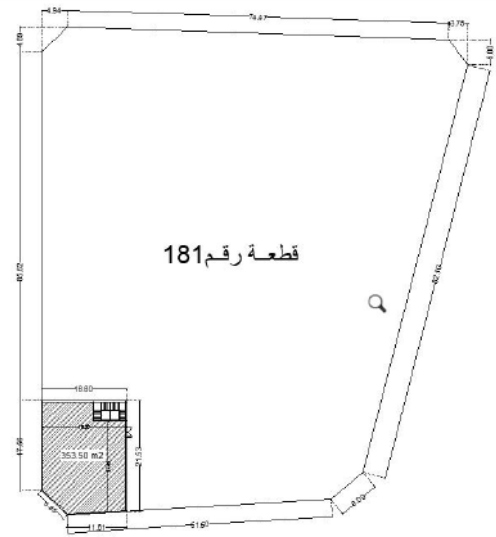
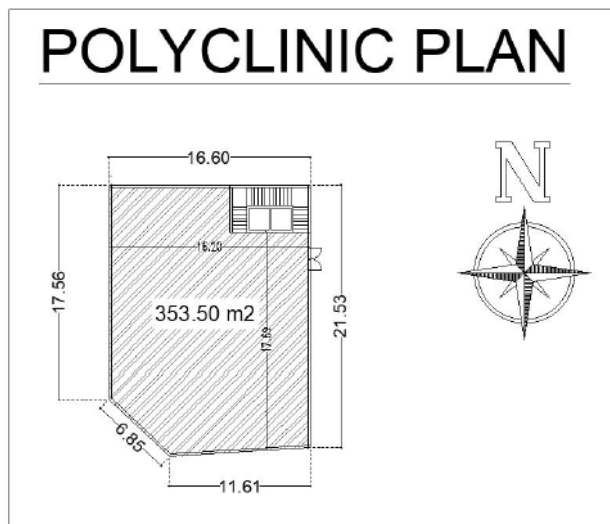


AK RIYADH PARK

THE POLYCLINIC PLAN

AK Riyadh Park features a dedicated Polyclinic Area planned to accommodate professional medical and healthcare services in a modern and accessible setting. This facility is designed to create added value for the project by integrating essential healthcare services within the commercial development.

The polyclinic space is suitable for clinics, doctors' offices, consultation services, and supporting medical activities, making it a practical and attractive option for healthcare operators. Its presence within AK Riyadh Park enhances the project's appeal by serving the daily needs of tenants, visitors, and the wider Jubail community.





AK RIYADH PARK

CONTACT US

- @ perfectglobalcomltd@gmail.com
perfectglobal.akriyadhpark@gmail.com
- www.akriyadhpark.com

LOCATION

AK RIYADH PARK (FORMERLY RIYADH PARKING)
JUBAIL CITY CENTER, EASTERN PROVINCE,
KINGDOM OF SAUDI ARABIA.

AK RIYADH PARK